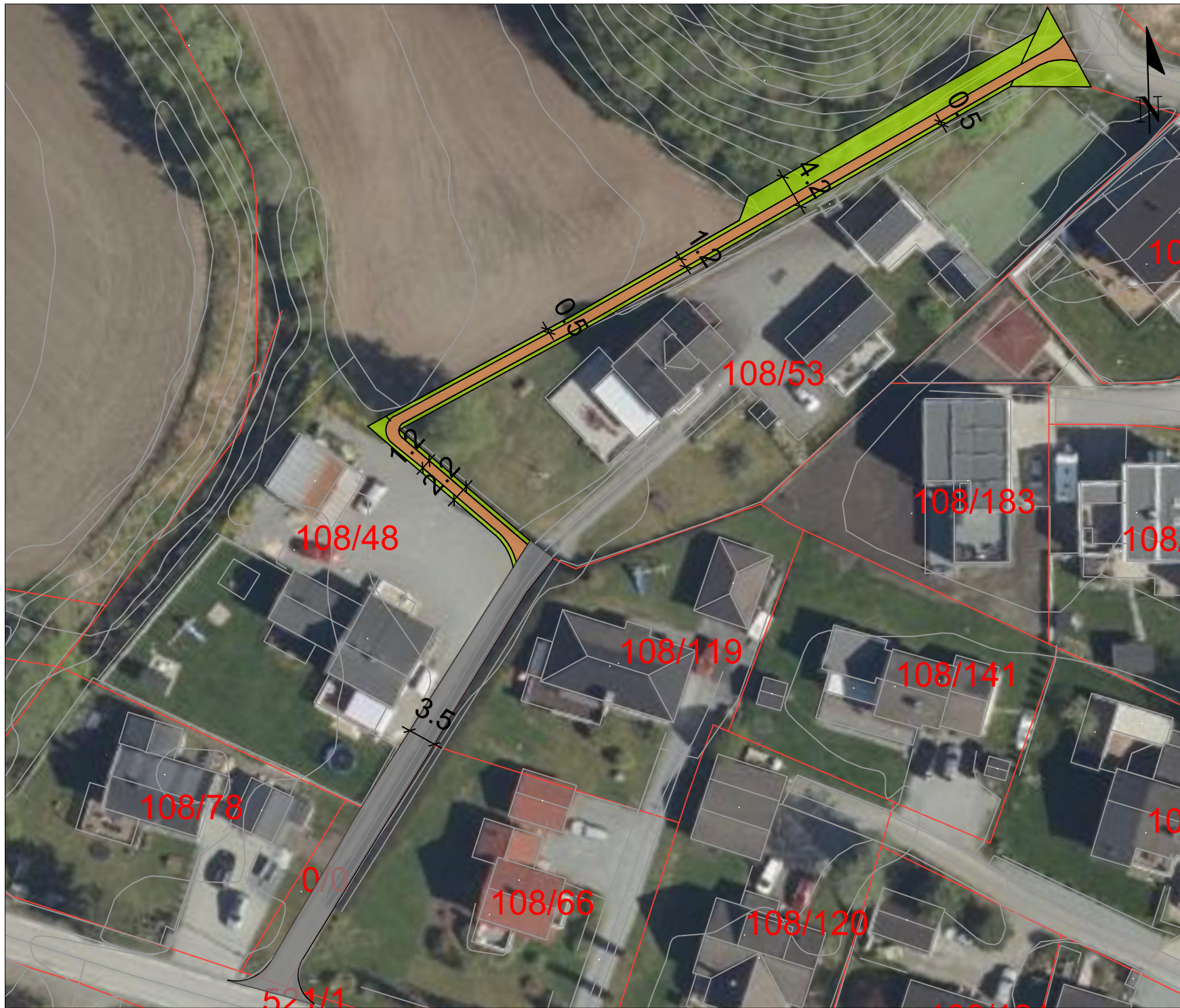


Grunnerverv G/S  
PlanID 5003 Prestmøvegen  
boliger, gnr 108 bnr 106, 169 m.fl.



108/66  
3 m<sup>2</sup>

108/53  
203 m<sup>2</sup>

108/48  
55 m<sup>2</sup>

111/3  
273 m<sup>2</sup>

108/2  
48 m<sup>2</sup>

TOTAL  
582 m<sup>2</sup>